

## Proteus Alarm Interface

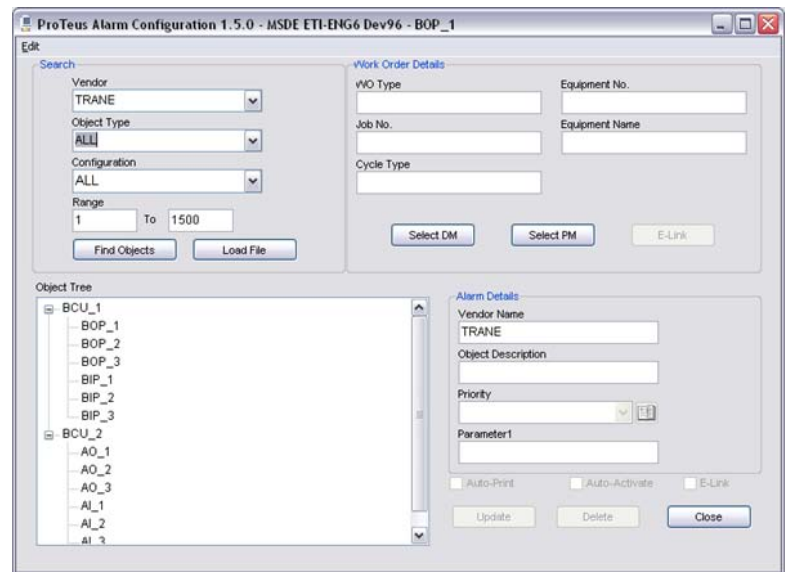
With the ever-increasing complexity associated with today's automated buildings, the breakdown of critical systems is an increased risk to building and facility managers. Eagle Technology's Proteus Alarm Interface (PAI) can help. Providing continuous alarm vigilance via a direct interface to most Building Automation Systems (BAS) (supporting such popular standards as BACnet®), PAI automatically issues work orders based on alarms, events or equipment runtimes. The work order defines specific tasks and parts required to complete the job quickly and efficiently. Work orders may be sent via email or printer or sent directly to a technicians' mobile device or pager, informing them of alarm status and actions.

PAI provides one-of-a-kind integration with BAS environments to help facilities around the world achieve cost-effective maintenance management. Benefits include:

- Automated work order generation
- Managed workloads to correspond with available manpower
- Increased asset life
- Enhanced response time
- Reduction in paperwork and communications cost

### Specifications

ProTeus Data Interface (PDI) is a device instance, running as a client, facilitating receipt of alarms from selected objects. Configured alarms are sent to Proteus for automated work order generation based on predetermined tasks. PAI supports both Algorithmic Change and Intrinsic Reporting.



Learn more!  
Contact us at  
**1-800-388-3268**

## PAI Requirements

- The Alarm Manager and Alarm Configuration Programs must be located on the same LAN(subnet) as the BACnet network. Multiple subnets require routers.
- A third party software is used for BACnet communications using BACnet/ IP or ISO 8802-3 (Ethernet). Manual configuration for binding to Ethernet adapter is required.
- The Alarm Manager or Alarm Configuration programs cannot be installed on the same workstation with other programs that will also be communicating on BACnet.
- PAI implementation requires setup and configuration by trained system integrators.

## Supported Objects

There are no objects supported within the PDI device. This list identifies the objects of vendors' devices that are configurable to PDI.

- Analog Input
- Binary Input
- Multi-State Input
- Analog Output
- Binary Output
- Multi-State Output
- Analog Value
- Binary Value
- Multi-State Value

## Vendor Requirements

Vendor device compatibility with ANSI/ASRAE standard 135-2001.

- Support Intrinsic or Algorithmic Change Reporting.
- Support BACnet/IP or ISO 8802-3 (Ethernet) protocol.
- Support ANSI X3.4 Character Set
- Software capable of registering PDI device ID as a recipient for event notification. Eagle does not provide this function.

## Supported Vendors

Since PAI is a BACnet compliant device, any vendors meeting the requirements can interface to PAI.

- American Automatrix
- Andover Controls
- Delta Controls
- Honeywell
- Invensys
- Johnson Controls
- KMC Controls
- Novar Controls/Alerton
- Automated Logic
- Siemens
- Trane
- Tridium