

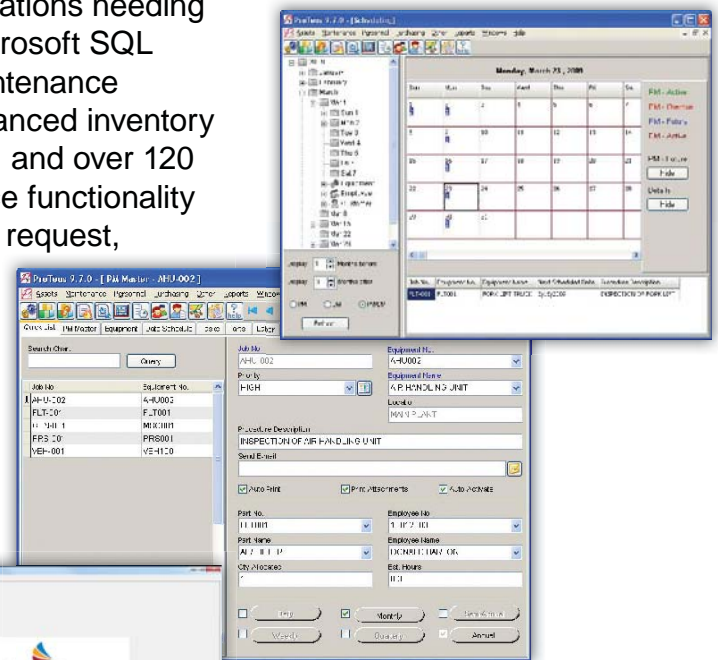
 **1-262-241-3845**

## Proteus Comparison Guide

Eagle Technology, Inc. provides CMMS products to meet the needs of a variety of customers in facilities. Our Proteus family of products is available in two versions to meet the needs of small, medium and large organizations, with a number of optional modules available to add functionality.

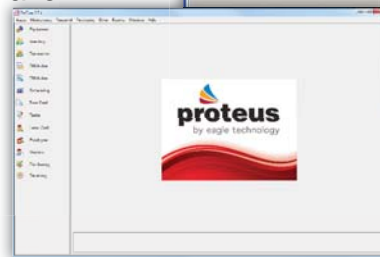
### Proteus Professional

The Proteus Professional edition is designed for operations needing up to eight concurrent CMMS users. It includes a Microsoft SQL Express database and has all the basic features maintenance tracking, plus advanced work order functionality, enhanced inventory control, expanded budgeting and administrative tools, and over 120 reports and graphs. Optional modules further enhance functionality by providing barcode and mobile capabilities, service request, and automated work order generation from control systems via the unique Proteus Alarm Interface.



### Proteus Enterprise

The Proteus Enterprise edition is specially designed for multi-site organizations that have a large amount of data to track. A full featured Enterprise Asset Management System; Proteus Enterprise supports networks using a MS SQL Server 2000, 2005 or 2008 database, and unlimited number of users. In addition to all the features of the Proteus Professional, this robust system offers an Audit Trail, ERP interface and multi-site management capabilities.



Proteus Features	Professional	Enterprise
Maximum number of concurrent CMMS users	1-8	Unlimited
Resource allocation and equipment scheduling	•	•
Multi-cycle work order scheduling for increased efficiency	•	•
Alarm interface to Building Automation Systems	○	○
E-mail work orders	•	•
Multiple cost centers	•	•
Budget vs. actual cost tracking	•	•
Standard reports	•	•
Enhanced reports and graphs	•	•

Proteus Features	Professional	Enterprise
Preventive maintenance work orders scheduled by date, day of week, or usage	•	•
Demand maintenance templates for fast response to common tasks	•	•
Multiple equipment per work order	•	•
Work order and purchase order approvals	•	•
Batch print/close work orders	•	•
“Quick Close” work orders	•	•
Equipment tracking with cost history, warranty, vendor, technical documentation, etc.	•	•
Inventory tracking with vendors, costs, reorder quantities, stock location, MSDS	•	•
Multiple inventory stockrooms	•	•
Employee files with labor craft and rates	•	•
Time card module for quick labor updates	•	•
Vendor module with contact information, parts purchased, purchasing history	•	•
Purchasing module for creating purchase requisitions and purchase orders, tracking shipments and receipts	•	•
Customer, asset group or tenant tracking	•	•
History files	•	•
Historical data archive and purge	•	•
Individual and group security rights, permissions	•	•
Data Import utility	•	•
User editable field names	•	•
Customized reports using Crystal Reports®	○	○
Multiple currency management	•	•
Multiple language support (English, Spanish, German, Portuguese, Hungarian, Turkish, Simplified Chinese)	•	•
Multiple database support		○
Multi-site management		○
Barcode interface	○	○
Standard service request	○	○
ProLink web-browser based service request	○	○
Mobile interface	○	○
HVAC equipment PM database	○	○
MS Project interface	○	○
Audit Trail for FDA 21CFR11 compliance or ISO 9000 requirements		○
Enterprise Resource Planning Interface		○