

Proteus MMX with GIS for Facility Management

Geographic Information Systems (GIS) is specific software used for mapping, capturing and analysing spatial and geographical data.

This software offers unique capabilities and flexible licensing for applying location-based analytics to infrastructure such as airports, roadways and government facilities in the US.

Proteus ArcGIS

With Proteus MMX ArcGIS, maintenance managers can gather, organize, and use the complex information that defines facilities and operations.

Industries

- Airports
- Education
- Government
- Healthcare
- Manufacturing
- Real Estate
- Retail
- Utilities
- And more

Benefits

- Find assets, capture data, and track patterns in your data so you can make better decisions and take action.
- Improve coordination and operational efficiency.
- Brings together information from across the organization to streamline operations.
- Smart maps optimize the management of infrastructure and assets.
- It allows maintenance managers to obtain data instantly.
- From facility maintenance to engineering and wayfinding, GIS improves communication and speeds results.
- It can be difficult to fully comprehend how daily-business operations affect a company's bottom line, but interactive data visualization makes it possible.

Proteus ArcGIS

Gain greater insights using contextual tools to visualize and analyze your data. Collaborate and share via maps, apps, dashboards and reports.



Maintenance

With a GIS it is possible to identify all the elements that need to be modified and to foresee the frequency of the intervention's optimization and improvement in each of them.

Equipment Effectiveness

Proteus MMX will manage, capture, and track inspection, maintenance and repair activities for cost containment, and risk reduction. When you combine a Proteus MMX with Total Productive Maintenance (TPM), you can eliminate costly machine downtime and shift to preventive maintenance.

Data Driven Insights

Proteus MMX KPI's are used to track performance in several areas over time to indicate when an organization is operating inside or outside of acceptable levels.

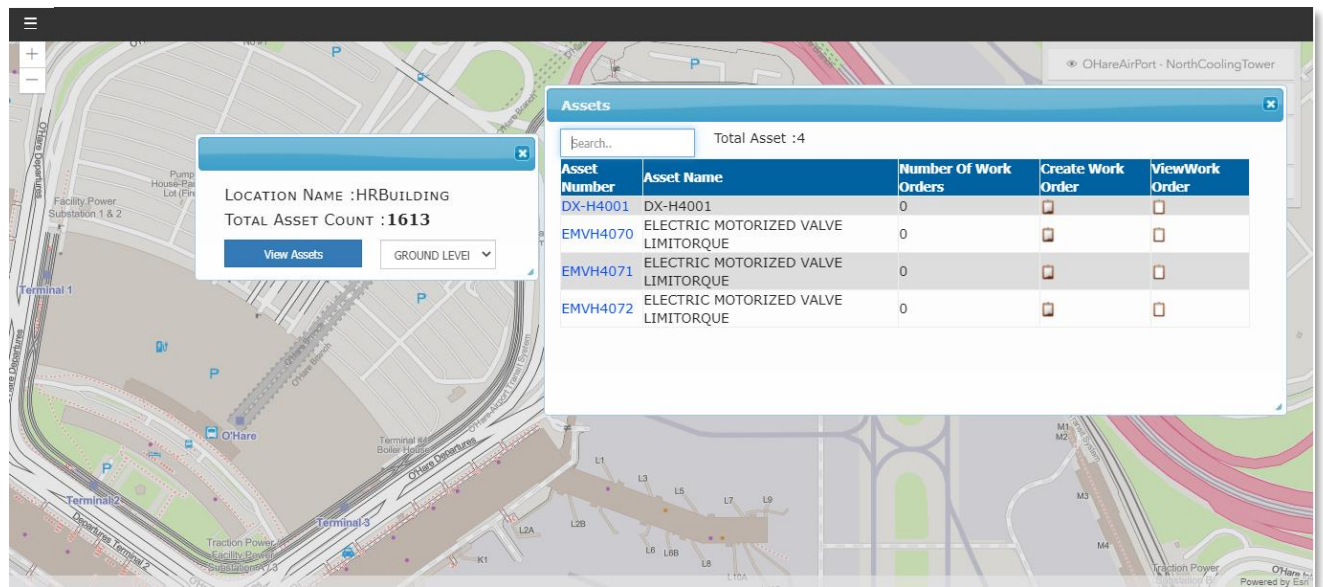
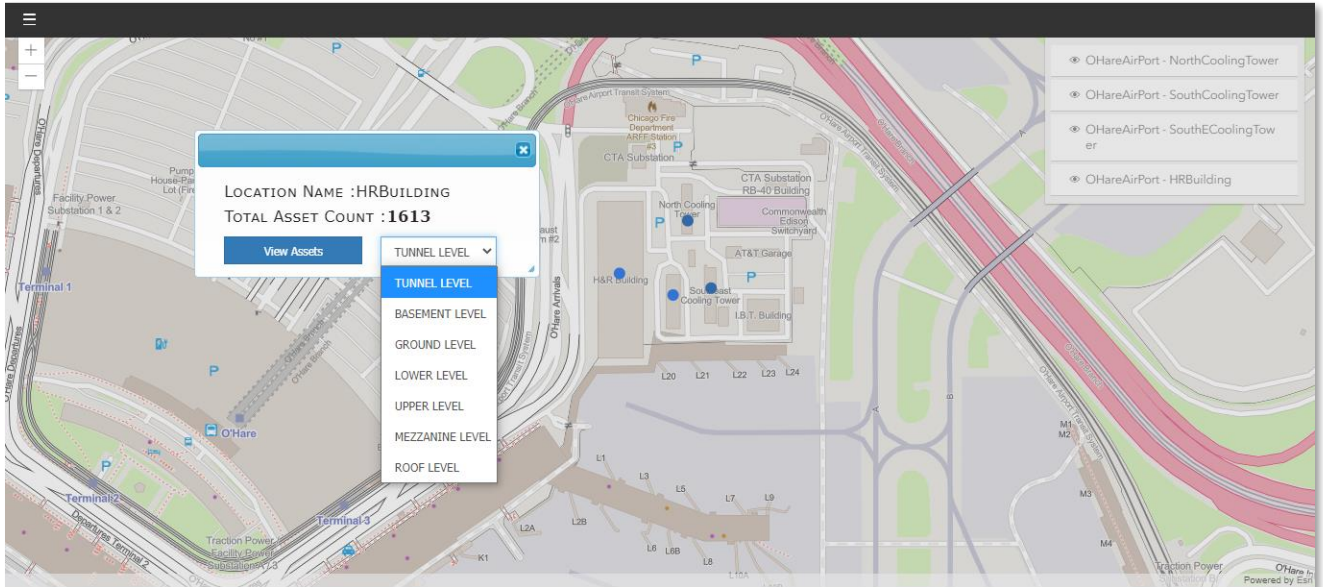
Compliance

When it comes to establishing a safe, compliant and productive workplace, an effective maintenance management solution is critical. Proteus MMX can improve your operations by offering one centralized, cloud-based and flexible system to manage and stay connected with your asset and inspection workflows

A screenshot of the Proteus MMX software interface. The top navigation bar includes 'Quick Links', 'Assets - Assets', and 'Log Out'. Below the navigation bar is a toolbar with various icons and a search bar. The main content area displays a table of assets with columns for Asset Number, Asset Name, Serial Number, Asset Tag, Description, Installation Date, Warranty Date, and Weight. The table contains several rows of asset data, including air dryers and air handling units. The bottom of the interface shows a footer with 'Records/Page 15', 'Goto Page 1', 'Page 1 Of 112', and '1669 Item(s) in 112 Pages'.

ArcGIS Product Screenshots

Examples of actual product at Airport Facility



Contact us

+1-262-241-3845

sales@eaglecmms.com

www.eaglecmms.com

